

# Leading Supplier of Booster Amplifiers for Tactical Military Radios

Vehicle, Airborne, Man-Pack, Maritime,  
Medical, Communications, Scientific and Industrial

Scalable 30 MHz to 3 GHz and up to 500 Watts  
Support for Existing and Emerging Waveforms



If You Can Imagine It, We Can Build It.

## Table of Contents

AR Modular RF.....	1 - 2
Military Products .....	3 - 6
Find It Fast: Tactical Booster Amplifiers.....	7
Find It Fast: Military Products.....	9 - 12
Commercial Applications .....	13 - 14
Find It Fast: Commercial Applications .....	15 - 16



# AR Modular RF for Tactical Booster Amplifiers, RF Systems And Modules

Located in Bothell, WA, AR Modular RF manufactures and distributes RF amplifier modules and broadband solid-state RF amplifier systems that play a critical role in wireless and radio communications, military communications, electronic warfare, electronic countermeasures, and homeland security. They have a variety of medical, scientific, and industrial applications.

- RF amplifier modules: 80 kHz–3,000 MHz, 5 to 500 watts
  - Broadband, narrowband, and custom designs available
- Rack-mount amplifier systems: 80 kHz–3,000 MHz, 5 to 1,000 watts
- Booster amplifiers for tactical military radios from 30 MHz to 3 GHz, 20–125 watts
- Power amplifiers for legacy communication designs as well as virtually every new and emerging communications system



# Read the Waves

Experienced specialists in amplifiers and boosting signals, we read the next wave of technology and market trends to deliver mission-critical, software-savvy solutions.

From market pioneers to industry technology trailblazers, we have always recognized the critical elements that drive the market: technological performance, dependability, and time to market. We pride ourselves in developing plug and play products and turnkey solutions.

We are focused on amplifiers and boosting signals and providing turnkey solutions to one of the most demanding customers in the world—the military. We work as a trusted partner to provide the most innovative solutions in the business. We look at the entire picture. We balance size, weight, and power requirements to provide an optimal solution.

On the battlefield, in the air, and on the ground, we keep on passing the toughest tests. In the most extreme and tortuous environments, our products are constantly pushed to their limits. Our amplifiers consistently perform beyond expectations.





## AR Modular RF Airborne Applications Airborne Certified, Gunship Approved

The booster amplifiers specified for these aircraft are the most reliable, easiest-to-use, long-range, and innovative booster amplifiers available today.

- Reliable
- Sophisticated
- In use
- Proven
- Lighter
- Tested

Our products have been tested and certified for military airborne applications.



AR-20H



EC-130J  
AR-75



C-130 Gunship  
AR-35



AR-50



CV-22 Osprey  
AR-50



MH-60M Blackhawk  
AR-20H



AR-35



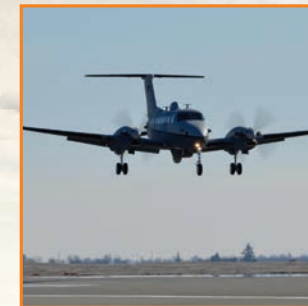
MH/AH-6M Little Bird  
AR-20H



MH-47G Chinook  
AR-20H



AR-75



MC-12 Liberty  
AR-50



Unmanned Aerial Vehicle  
AR-20H



# AR Modular RF Military Products

## Performs in Extreme Conditions, Highest Quality. Best Warranty.

AR delivers innovative technology, advanced design, and superior workmanship with lower cost per watt, plus a worldwide support network that is here for you today, tomorrow, and always. Everything we sell is backed by the best and most comprehensive warranty in the industry.

### Waveforms Supported:

- ANW2, IW, SRW, WNW, ASCM, SINCGARS, HAVEQUICK I and II, and others!

### Frequency Bands Supported:

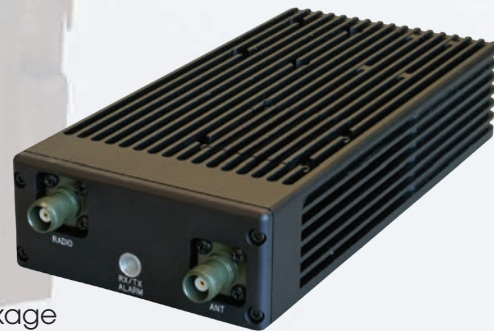
- HF/VHF/UHF/L-Band

### Supports Multiple Radio Platforms:

- AN/PRC-154 Rifleman™ Radio, AN/PRC-117F, AN/PRC-117G, AN/PRC-152, AN/PRC-148 (MBITR/JEM), AN/PSC-5D, AN/ARC-210, and others!

### Airborne Flight Certified AR-20H

- 20 watts
- 30-512 MHz
- Lighter package
- Lower profile
- Supports legacy and modern networking waveforms
- MIL-STD 810G (Including Gun Ship)
- MIL-STD 461F, MIL-STD 464C, MIL-STD 704F



### AR-50SE

- 50 watts
- 30-88 MHz
- SINCGARS compatible
- Compatible with Thales PRC-148, Harris PRC-152, Harris PRC-117F, Harris PRC-117G, and others



### SM-AR-50

- Shock mount kit
- Vehicle and aircraft



### AR-20

- 20 watts
- 30-512 MHz
- Lighter package
- Lower profile
- Internal LNA
- Co-site filtering
- Supports legacy and modern networking waveforms



### AR-50S

- 50 watts
- 30-88 MHz
- SINCGARS compatible
- Compatible with Thales PRC-148, Harris PRC-152, Harris PRC-117F, Harris PRC-117G, and others



## AR-50 Tactical Booster Amplifier Selected in the V-22 Osprey Upgrade

### AR-50

- 50 watts
- 30-512 MHz
- Internal LNA
- Supports legacy and modern networking waveforms
- DAMA and IW Certified
- 810G (including SB-X10001B)
- Compatible with Thales PRC-148, Harris PRC-152, Harris PRC-117F, Harris PRC-117G, and others



### AR-75

- 75 watts
- 30-512 MHz
- Compatible with Harris PRC-117F, Harris PRC-117G, and others
- Includes MIL-STD 461/1275 Filter
- Supports legacy and modern networking waveforms
- Airborne Safety Flight Certified



### AR-125R

- 125 watts
- 30-512 MHz
- Internal and external LNA
- 2U Rack Mount
- CW duty cycle
- Compatible with Harris PRC-117F, Harris PRC-117G, and others
- Supports legacy and modern networking waveforms





## Tactical Booster Amplifiers

MODEL NAME	DESCRIPTION
AR-20	20 watts PEP, 30–512 MHz, Tx/Rx Booster Amplifier with LNA
AR-20KT	20 watts PEP, 30–512 MHz, Tx/Rx Booster Amplifier Kit with LNA. Kit includes amplifier, cables, pouches and LOS antenna.
AR-20KT-DUAL	20 watts PEP, 30–512 MHz, Tx/Rx Booster Amplifier Kit with LNA. Kit includes amplifier, cables, pouches, switch, LOS and SATCOM antennas.
AR-20B	20 watts PEP, 30–512 MHz, Tx/Rx Booster Amplifier
AR-20BKT	20 watts PEP, 30–512 MHz, Tx/Rx Booster Amplifier Kit. Kit includes amplifier, cables, pouches and LOS antenna.
AR-20BKT-DUAL	20 watts PEP, 30–512 MHz, Tx/Rx Booster Amplifier Kit. Kit includes amplifier, cables, pouches, switch, LOS and SATCOM antennas.
AR-20H	20 watts PEP, 30–512 MHz, Tx/Rx Booster Amplifier with Remote Keyline
AR-20EP	20 watts CW/PEP, 225–450 MHz, Tx/Rx Booster Amplifier
AR-20HC2	20 watts PEP, 300–512 MHz, Tx/Rx Booster Amplifier
AR-35	35 watts PEP, 30–512 MHz, Tx/Rx Booster Amplifier
AR-50	50 watts PEP, 30–512 MHz, Tx/Rx Booster Amplifier
AR-50RC	25 watts PEP, 30–512 MHz / 50 watts PEP 290–320 MHz, RF Tx/Rx Booster Amplifier
AR-50RCS	50 watts PEP, 30–88 MHz, Tx/Rx Booster Amplifier
AR-50S	50 watts PEP, 30–88 MHz, Tx/Rx Booster Amplifier
AR-50-SAT75	50 watts PEP, 30–512 MHz / 75 watts PEP 220–324 MHz, Tx/Rx Booster Amplifier
AR-50SE	50 watts PEP, 30–88 MHz, Tx/Rx Booster Amplifier
AR-55L	45 watts PEP, 1.2–1.8 GHz, Tx/Rx Booster Amplifier
AR-75	75 watts PEP, 30–512 MHz, Tx/Rx Booster Amplifier
AR-75-M50	50 watts PEP, 30–512 MHz, Tx/Rx Booster Amplifier
AR-125R	125 watts PEP, 30–512 MHz, Tx/Rx 19-in. Rack Mount Booster Amplifier





# Find It Fast: AR Modular RF Military Products



FEATURES	AR-20	AR-20KT	AR-20B	AR-20BKT	AR-20H	AR-20EP	AR-20HC2	AR-35	AR-50
Power Output	20 watts CW 20 watts PEP	20 watts CW 20 watts PEP	20 watts CW 20 watts PEP	20 watts CW 20 watts PEP	20 watts CW 20 watts PEP	20 watts CW 20 watts PEP	20 watts CW 20 watts PEP	35 watts CW nominal; 35W PEP with 70% AM modulation	50 watts CW nominal; 50W PEP with 70% AM modulation; <10% distortion typical
Frequency Range	30 MHz–512 MHz	30 MHz–512 MHz	30 MHz–512 MHz	30 MHz–512 MHz	30 MHz–512 MHz	225 MHz–450 MHz	300 MHz–500 MHz	30 MHz–512 MHz	30 MHz–512 MHz
Input Power	2W CW or PEP for full 20W output	2W CW or PEP for full 20W output	2W CW or PEP for full 20W output	2W CW or PEP for full 20W output	Nominal 2W–5W CW or PEP for full 20W output	2W CW or PEP for full 20W output	Nominal 0.75W–3W CW or PEP for full 20W output	3W PEP typical for 35W PEP Output	<5W CW typical for 50W Output
SATCOM Rx LNA	Built-in	Built-in	n/a	n/a	Built-in	Built-in	Built-in	n/a	Built-in
SATCOM Rx LNA Gain/Noise Figure	12 dB/<2.5 dB typical	12 dB/<2.5 dB typical	n/a	n/a	6 dB/4 dB typical	12 dB/4 dB typical	10 dB/2.5 dB typical	n/a	12 dB/2.5 dB typical
SATCOM Rx Co-site Filter	Co-Site filter provides >35 dB protection to the SATCOM receive channels	Co-Site filter provides >35 dB protection to the SATCOM receive channels	n/a	n/a	n/a	n/a	Yes	n/a	Band pass frequency 239–273 MHz, Out of band rejection >45 dB typical
Modulation	All Legacy and Modern complex tactical communications waveforms like ANW2, IW, and SRW	All Legacy and Modern complex tactical communications waveforms like ANW2, IW, and SRW	All Legacy and Modern complex tactical communications waveforms like ANW2, IW, and SRW	All Legacy and Modern complex tactical communications waveforms like ANW2, IW, and SRW	All Legacy and Modern complex tactical communications waveforms like ANW2C and SRW	All Legacy and Modern complex tactical communications waveforms	All Legacy and Modern complex tactical communications waveforms like F SK, ANW2C and SRW	AM, FM, or PM, and Tactical communications waveforms	All Legacy and Modern complex tactical communications waveforms like ANW2, WNW, and SRW
Power Requirements	12–35.5 VDC single XX90 battery or 12 and 28 VDC vehicle supply	12–35.5 VDC single XX90 battery or 12 and 28 VDC vehicle supply	12–35.5 VDC single XX90 battery or 12 and 28 VDC vehicle supply	12–35.5 VDC single XX90 battery or 12 and 28 VDC vehicle supply	18 to 35.5 VDC compliant to MIL-STD-704F,, MIL-STD 461F, MIL-STD 464C	12 to 35.5 VDC	9.5 to 36 VDC	13.8 VDC–33 VDC, from two BAXX90 Batteries or 12 and 24 VDC vehicle systems, filtered and transient protected	12–36 VDC, from Battery or 12 and 24 VDC vehicle systems. Filtered and transient protected
Current@24 VDC nominal	<3.2A Amps @ 28 V typical	<3.2A Amps @ 28 V typical	<3.2A Amps @ 28 V typical	<3.2A Amps @ 28 V typical	<3.2A Amps @ 24 V typical	<3.2A Amps @ 24 V typical	<3.5A Amps @ 24 V typical	5.5 Amps nominal	7.5 Amps nominal
Operating Temperature	-30 to +60° C Ambient	-30 to +60° C Ambient	-30 to +60° C Ambient	-30 to +60° C Ambient	-40 to +71° C Ambient	-30 to +60° C Ambient	-40 to +70° C Ambient	-30 to +60° C	-30 to +60° C
Water	IP67	IP67	IP67	IP67	IP67	IP67	IP67	66 ft for 20 min	IP67
Vibration/Shock/ Humidity	Designed to meet applicable sections of MIL STD 810/ designed for ground/base vehicle use	Designed to meet applicable sections of MIL STD 810/ designed for ground/base vehicle use	Designed to meet applicable sections of MIL STD 810/ designed for ground/base vehicle use	Designed to meet applicable sections of MIL STD 810/ designed for ground/base vehicle use	MIL-STD-810G	MIL-STD-810	MIL-STD-810	MIL STD 810F/Hand portable	Per MIL STD 810G (Including SB-X10001B)
Size (HxWxD) Inches	1.58 x 3.75 x 5.05 in.	1.58 x 3.75 x 5.05 in.	1.58 x 3.75 x 5.05 in.	1.58 x 3.75 x 5.05 in.	1.86 x 3.75 x 8.78 in.	1.58 x 3.75 x 5.05 in.	1.86 x 3.75 x 8.78 in.	2.30 x 3.00 x 7.70 in.	2.50 x 6.00 x 7.50 in.
Weight	1 lb. 10 oz	2 lb. 15 oz (Full Kit)	1 lb. 10 oz	2 lb. 15 oz (Full Kit)	2.6 lb.	1 lb. 10 oz	2.6 lb.	2 lb.	4.4 lb.
JITC Certified	Yes	Yes	No	No	No	No	No	No	PSC-5D, PRC-117G, PRC-148 JEM
GSA Schedule	Yes	Yes	Yes	Yes	Yes	Yes	Yes	Yes	Yes

# Find It Fast: AR Modular RF Military Products



FEATURES	AR-50RC	AR-50RCS	AR-50S	AR-50SE	AR-55L	AR-75	AR-75-M50	AR-125R
Power Output	LOS: 25 watts CW nominal; 25W PEP with 70% AM modulation; <10% distortion typical SATCOM (290 MHz to 320 MHz); 50 watts	50 watts CW nominal; 50W PEP with 70% AM modulation; <10% distortion typical	50 watts CW nominal; 50W PEP with 80% AM modulation; <10% distortion typical	50 watts CW nominal; 50W PEP with 80% AM modulation; <10% distortion typical	45W PEP (+2 dB / -1 dB), typical across the band, with 5W PEP input	75 watts CW nominal; 75 W PEP with 70% AM modulation; <10% distortion typical	Nominal 50 watts CW; 50W PEP 70% DOM; < 10% distortion <5% typical	125 watts CW typical
Frequency Range	30 MHz–512 MHz	30 MHz–90 MHz	30 MHz–88 MHz	30 MHz–88 MHz	1,250–1,800 MHz	30 MHz–512 MHz	30 MHz–512 MHz	30 MHz–512 MHz
Input Power	<5 watts CW typical for 25W LOS and 50W SATCOM Output	<5 watts CW typical for 50 watts Output	<5 watts CW typical for 50 watts Output	<5 watts CW typical for 50 watts Output	2–5 W PEP	5–8 watts CW typical for nominal 75 watts Output	~5–7 watts CW typical for 50 watts Output	10 watts typical, up to 20W without damage
SATCOM Rx LNA	Built-in	n/a	n/a	n/a	Built-in	Built-in	Built-in	External/KMW2030P
SATCOM Rx LNA Gain/Noise Figure	12 dB/2 dB typical	n/a	n/a	n/a	12 dB/<3.5 dB typical	12 dB/2 dB typical	12 dB/2 dB typical	12 dB/2 dB typical
SATCOM Rx Co-site Filter	Band pass frequency 239 MHz–273 MHz, Out of band rejection 35 dB typical	n/a	n/a	n/a	High pass Filter, Out of band rejection 40 dB typical	Band pass frequency 239–273 MHz, Out of band rejection 45 dB typical	Band pass frequency 239 MHz–273 MHz, Out of band rejection 45 dB typical	n/a
Modulation	AM, FM, or PM, and tactical communications waveforms	AM, FM, or PM, and tactical communications waveforms	AM, FM, or PM, and tactical communications waveforms	AM, FM, or PM, and tactical communications waveforms	Constant Envelope Waveforms	AM, FM, or PM, and Tactical communications waveforms	AM, FM, or PM, and modern Tactical networking communication waveforms	AM/FM/PM, SINCARS, HPW, HAVEQUICK, DAMA, IW, SRW and ANW2, plus others
Power Requirements	12–35.5 VDC filtered and transient protected for 12 or 24 volt vehicle systems or dual XX90 batteries	12–35.5 VDC filtered and transient protected for 12 or 24 volt vehicle systems or dual XX90 batteries	12–36 VDC filtered and transient protected for 12 or 24 Volt vehicle systems or dual XX90 batteries	12–33 VDC MIL-STD-461E and 1275	28 VDC filtered and transient protected	18–35.5 VDC filtered and transient protected for 24 volt vehicle systems batteries MIL-STD 1275 and 461 compliant DC-DC internal power supply	18–35.5 VDC filtered and transient protected for 24 volt vehicle systems batteries; MIL-STD 1275 and 461 compliant DC-DC internal power supply filter	AC power: 100-240 VAC, 50-60 Hz DC power: 18-36 VDC (approx. 650 watts @ 24 VDC)
Current@24 VDC nominal	<7.5 Amps @ 24 V typical	<7.5 Amps @ 24 V typical	<7.5 Amps @ 24 V typical	<7.5 Amps @ 24 V typical	7 Amps @ 28 V typical	<9.5 Amps @ 24 V typical	< 9.5 Amps @ 24 V typical	27 Amps typical
Operating Temperature	-30 to +60°C	-30 to +60°C	-30 to +60°C	-40 to +55°C	-30 to +60 °C Ambient	-30 to +60 °C Ambient	-30 to +60° C	-30 to +60° C (ambient)
Water	IP67	IP67	IP67	IP67	IP67	IP67	IP67	No
Vibration/Shock/Humidity	Per MIL STD 810F	Per MIL STD 810F	Per MIL STD 810F	Per MIL STD 810F	Designed to meet applicable sections of MIL STD 810F/ designed for ground/base vehicle use	Per MIL STD 810F	Per MIL STD 810F	Per MIL-STD-461
Size (HxWxD) Inches	2.50 x 6.00 x 7.50 in.	2.50 x 6.00 x 7.50 in.	2.50 x 6.00 x 7.50 in.	2.50 x 6.50 x 9.93 in.	2.5 x 6.0 x 7.5 in.	3.00 x 6.00 x 11.17 in.	3.00 x 6.00 x 11.17 in.	3.5 x 19 x 24 in.
Weight	4.4 lb.	4.4 lb.	4.4 lb.	8.0 lb.	6.0 lb.	10.5 lb.	10.5 lb.	~ 25 lb.
JITC Certified	Based off AR-50 design	Based off AR-50 design	Based off AR-50 design	Based off AR-50 design	No	No	No	No
GSA Schedule	Yes	Yes	Yes	Yes	Yes	Yes	Yes	Yes

Cable assemblies, power cables, shock-mount kits, and other accessories are available for booster amplifiers.

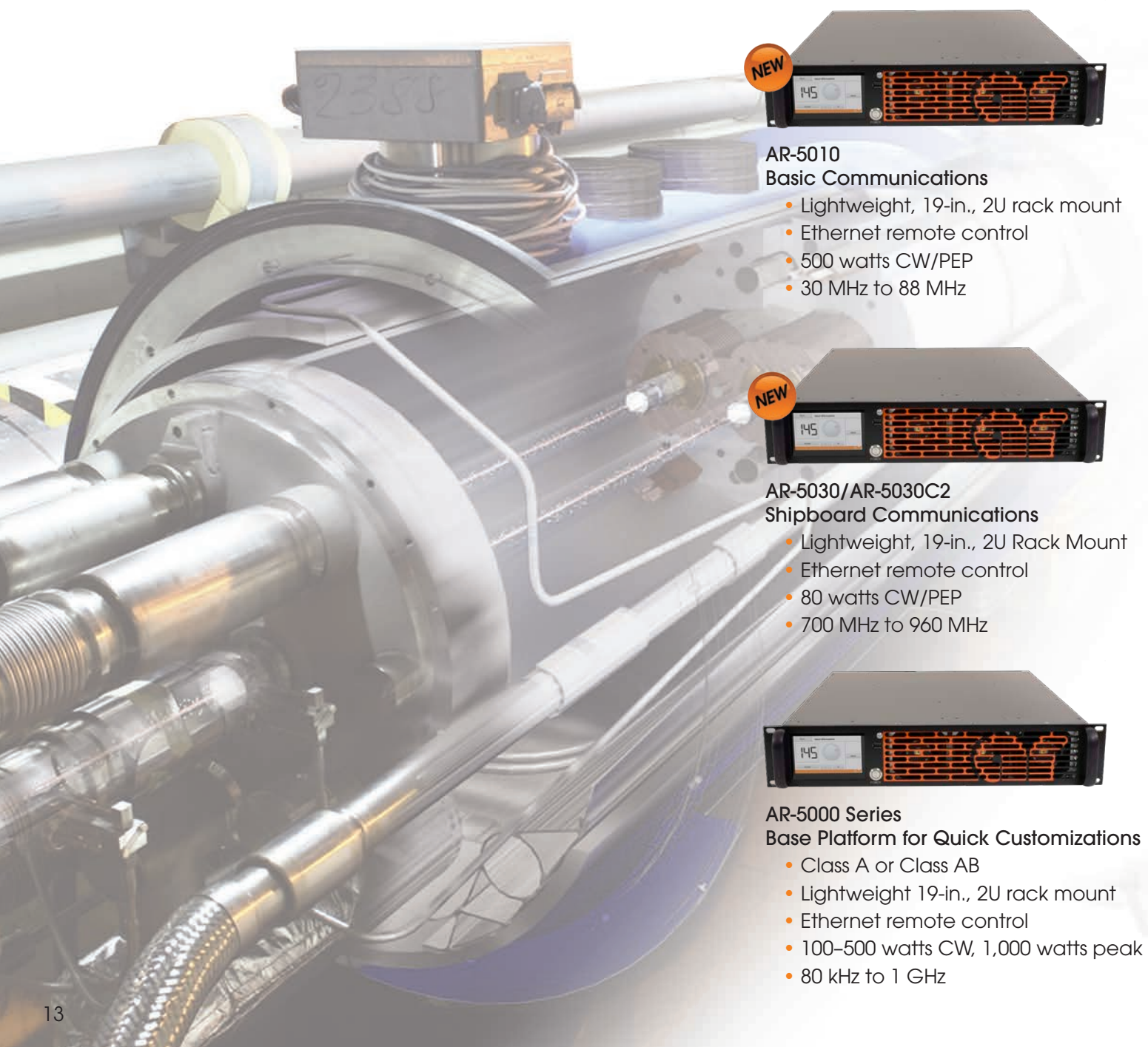


## If You Can Imagine It, We Can Build It

The company is also known for superior quality rack-mounting and table-top amplifier systems and modules from 80 kHz to 3,000 MHz. With output powers from 5–1,000 watts, these systems and modules are used for communications and a variety of medical, scientific, and industrial applications.

Perhaps most important, AR Modular RF helps clients find the best solutions to their most demanding requirements by offering customer-specific designs and semi-custom modifications to our existing line of products.

All AR Modular RF products are backed by the three-year, no-nonsense warranty.



- AR-5010**  
Basic Communications
- Lightweight, 19-in., 2U rack mount
  - Ethernet remote control
  - 500 watts CW/PEP
  - 30 MHz to 88 MHz



- AR-5030/AR-5030C2**  
Shipboard Communications
- Lightweight, 19-in., 2U Rack Mount
  - Ethernet remote control
  - 80 watts CW/PEP
  - 700 MHz to 960 MHz



- AR-5000 Series**  
Base Platform for Quick Customizations
- Class A or Class AB
  - Lightweight 19-in., 2U rack mount
  - Ethernet remote control
  - 100–500 watts CW, 1,000 watts peak
  - 80 kHz to 1 GHz

### Modules for OEMs and Integration

- 10 kHz to 6 GHz
- High- and low-gain power amplifier modules
- Mini-system PA modules with ALC and interfaces



### Subsystems for Integration

- Custom packaging
- Engineered to customer specifications
- Sub-octave and multi-octave designs



### Physics Applications

- Custom frequency band
- Highly repeatable performance unit to unit
- Multiple calibrated monitoring ports
- Highly reliable for long-term 24/7 use



### Communication Systems

- VHF/UHF band operation
- Up to 1,000 watt output
- 24/7 operation capable
- Repeatable performance unit to unit for field interchangeability
- Single-phase and three-phase AC power capable from same unit



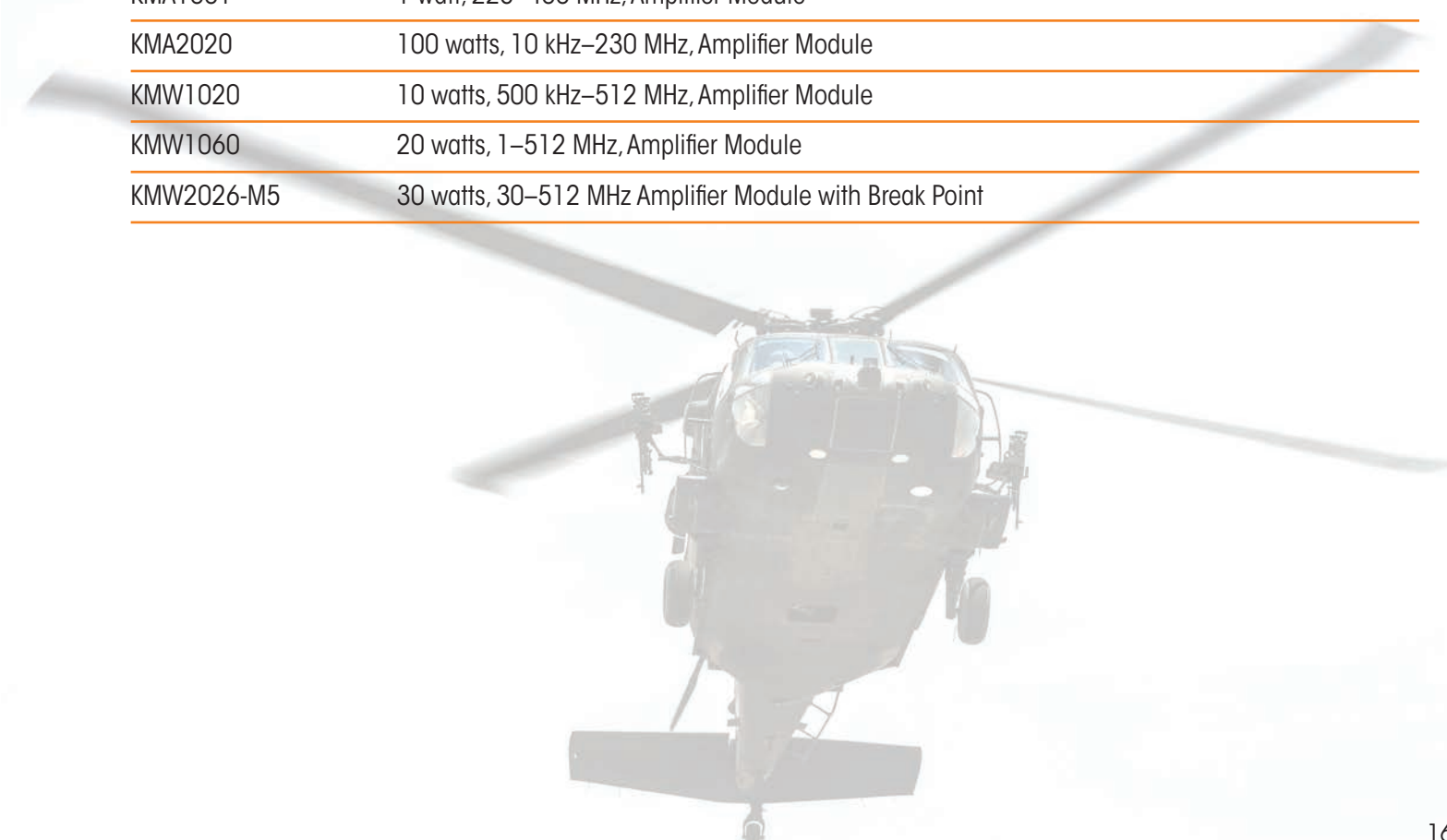


## Rack Mount Amplifiers

MODEL NAME	DESCRIPTION
AR-5010	500 watts, 30 MHz–88 MHz, 19-in. Rack Mount
AR-5030	80 watts, 700 MHz–960 MHz, 19-in. Rack Mount
AR-5030C2	80 watts, 700 MHz–960 MHz, Shipboard 19-in. Rack Mount
AR-5000	19-in. Rack Mount Product Series. 100–500 watts, 80 MHz–1,000 MHz (Call factory for details)
KAA1020	25 watts, 10 kHz–230 MHz RF Amplifier
KAA4020	500 watts, 1 MHz–50 MHz, RF Amplifier, 19-in. Rack Mount
KAW1080	25 watts, 10 kHz–1,000 MHz, Dual Band RF Amplifier, 19-in. Rack Mount
KAW2020-M16	100 watts, 220 MHz–245 MHz, RF Amplifier, 19-in. Rack Mount
KAW2100-M2	200 watts, 200–500 MHz, RF Amplifier, 19-in. Rack Mount
KAW5050	1,000 watts PEP, 500 watts CW, 225 MHz–400 MHz, RF Amplifier, 19-in. Rack Mount
KAA2020	100 watts, 500 kHz–100 MHz, RF Amplifier, 19-in. Rack Mount
KAA2026	125 watts, 700 kHz–3 MHz, RF Amplifier, 19-in. Rack Mount
KAA2030	200 watts, 500 kHz–40 MHz, RF Amplifier
KAA2030-M11	300 watts, 500 kHz, RF Amplifier
KAA2070-M11	100 watts, 70 MHz–76 MHz, RF Amplifier, 19-in. Rack Mount
KAA3020	250 watts, 2 MHz–32 MHz, RF Amplifier, 19-in. Rack Mount
KAA4021P	300 watts, Pulse, 1 MHz–50 MHz, RF Amplifier, 19-in. Rack Mount
KAA5170P	1,000 watts, Pulse, 500 kHz–5.5 MHz, RF Amplifier, 19-in. Rack Mount
KAW1020	5 watts, 500 kHz–1,000 MHz RF Amplifier
KAW1040	20 watts, 1 MHz–512 MHz, RF Amplifier
KAW1050	25 watts, 1 MHz–400 MHz, RF Amplifier
KAW2020	100 watts, 200 MHz–500 MHz, RF Amplifier, 19-in. Rack Mount
KAW2040	100 watts, 100 MHz–500 MHz, RF Amplifier, 19-in. Rack Mount
KAW2300	100 watts PEP, 100 MHz–1,000 MHz, RF Amplifier, 19-in. Rack Mount
KAW4040-M12	500 watts, 390 MHz–410 MHz, RF Amplifier, 19-in. Rack Mount
KAW5030	200 watts, 800 watts Peak, 100 MHz–400 MHz, RF Amplifier, 19-in. Rack Mount

## Amplifier Modules

MODEL NAME	DESCRIPTION
KMA1040	50 watts, 200 kHz–50 MHz, Amplifier Module
KMA2040	200 watts, 500 kHz–40 MHz, Amplifier Module
KMA2040-M12	200 watts, 500 kHz–40 MHz, Amplifier Module
KMA2040-M22	200 watts CW, 250 watts Peak, 2–30 MHz, Amplifier Module
KMA2040-M25	100–500 watts, 100 kHz–50 MHz, Amplifier Module
KMA2040P	200 watts, (CW/Pulse) 500 kHz–40 MHz, Amplifier Module
KMA4040	400 watts, 30–40 MHz, Amplifier Module
KMW2025	100–200 watts CW, 500 watts Pulse, 30–512 MHz, Amplifier Module
KMW2026-M15	40 watts, 225–450 MHz, Amplifier Module
KMW2026-M20	100–200 watts, 30–512 MHz Amplifier Module with Break Point
KMW2026-M26	60 watts, 291 MHz, Amplifier Module
KMW2040-LTE	100 watts CW/125 watts Peak, 225–400 MHz, Amplifier Module
KMW2040-M17	100 watts, 225–400 MHz, Amplifier Module
KMA1001	1 watt, 225–400 MHz, Amplifier Module
KMA2020	100 watts, 10 kHz–230 MHz, Amplifier Module
KMW1020	10 watts, 500 kHz–512 MHz, Amplifier Module
KMW1060	20 watts, 1–512 MHz, Amplifier Module
KMW2026-M5	30 watts, 30–512 MHz Amplifier Module with Break Point





# AR's Competitive Edge

At AR, there's no substitute for customer responsiveness. It's the foundation of our business and the AR value that's recognized around the globe. It's one of the key reasons AR has become the worldwide leader in EMC, wireless and beyond.

AR products do more, last longer, work harder, and make your job easier. And that gives you a fierce competitive edge. Only AR delivers innovative technology, advanced design, quality build and workmanship, mismatch capability, durability and longevity, less cost per watt, and a worldwide support network that's here for you today and tomorrow.

With the combined resources of all the AR companies, we simply have more of the best people making the products to overcome your toughest challenges.

## **AR** Modular RF

- Tactical Booster RF Amplifiers for Military Radios
- RF Amplifiers and Modules for Industrial, Medical, Scientific and Communication Applications
- RF Rack Mount Amplifiers for Industrial, Medical, Scientific and Communication Applications

## **AR** RF/Microwave Instrumentation

- RF Solid State Amplifiers 1–50,000 watts, dc to 1 GHz
- Microwave Amplifiers 1–10,000 watts, 0.8 to 50 GHz
- Antennas to 15,000 watts input power, 10 kHz to 50 GHz
- RF Conducted Immunity Test Systems
- EMC Test Software
- EMC and RF Test Accessories
- Power-Measuring Equipment
- Positioning Equipment
- Chambers
- Accessories

Connect with us!



facebook.com/ARRFMicrowave



linkedin.com/company/ar-rf-microwave-instrumentation

## **SunAR** RF Motion

- Positioning equipment, turntables and towers
- Distributed antenna systems
- Reverberation chamber stirrers
- EMC Test Antennas

## **AR** Europe

- Offering a complete line of RF Products and testing solutions for the European market

Want to know more about AR? Need help with any RF solutions or testing procedures?

Here's how to reach AR and get all the help you need:

[www.arworld.us](http://www.arworld.us)

## **AR** Modular RF

21222 30th Dr. SE, Building C, Suite 200  
Bothell, WA 98021, USA  
Tel 425-485-9000 • Fax 425-486-9657

## **AR** RF/Microwave Instrumentation

160 Schoolhouse Road  
Souderton, PA 18964, USA  
Tel 215-723-8181

## **SunAR** RF Motion

6780 Sierra Court, Suite R  
Dublin, CA 94568, USA  
Tel 925-833-9936 • Fax 925-833-9059

## **AR** Europe

National Technology Park, Ashling Building  
Limerick, Ireland V94 W9FP  
+353 61 504300 • Fax +353 61 504301  
AR Benelux +31 172 423000  
AR France +33 147 917530  
AR Deutschland GmbH +49 6101 80270 0  
AR United Kingdom +44 1908 282766

AR RF/Microwave Instrumentation is ISO Certified.



## **AR** Global Promise

*The AR warranty is more than just a warranty, it's a promise, backed by a knowledgeable support team that's always there for you to help solve any problems and answer any questions, today and tomorrow. AR warrants its amplifiers, antennas, test systems, power meters, field monitoring equipment, conducted immunity generators, couplers and tripods to be free of defects in materials and workmanship for a period of three years from date of shipment. Vacuum, traveling wave tubes and powerheads carry a one year warranty.*