

Bidirectional Battery-Tester

Type BRTS-DC-3867

Continuous transfer from mains supply to energy recovery up to 500 kW

Database system for data acquisition

Client-Server-Tool

Fast 480-channel data logger (option)

Battery safety device (BSD)

High dynamic (transient time < 3msec)

Low ripple $\leq 0.5\%$

Electrical isolation

Low mains feed back through P.F.C-

Output load up to 600 A every channel

(paralleling up to 2 channels)

Intelligent monitoring functions

Autark system with redundant supervision

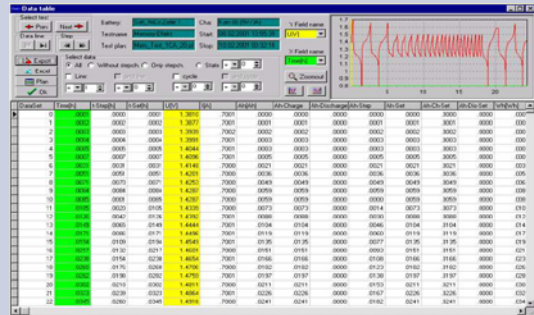
Programmable limits for V, A, kW

Output voltage up to 600 V

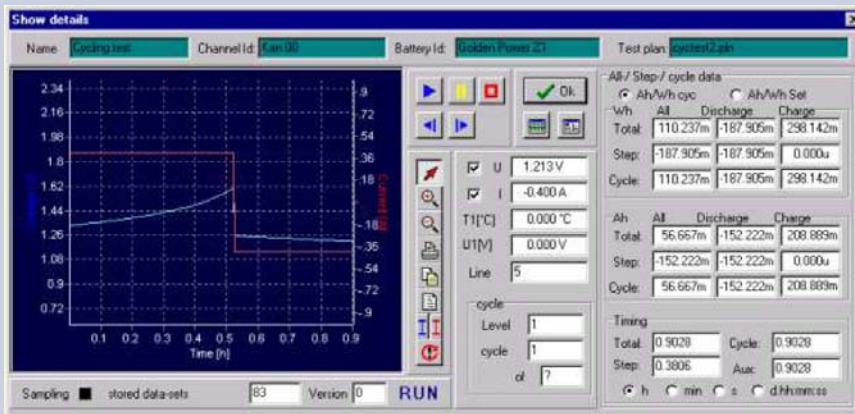
Robust construction for test fields

Natural cooling

Customer specific designs



Level	Label	Comment	Parameter	Transition	Actual	Flag/Status	Comment
1	Start		Test1-18°C				Overtemperature protection
2	Charge		1-680mA	4-Test1-18°C	UMax-U180V	1-2min	Charge
3	Cycle start		U1.8V		Gate READY		Main cycle
4	Discharge		1-680mA	AB-1.1CN		1-2min	Discharge 10%
5	Cycle end						Sub cycle
6	U1_test		11-180mA				DC IR Test
7	Cycle end		Case1-5				
8	Cycle end		Case1-18				
9	READY	Charge	1-680mA	4-Test1-18°C	UMax-U180V	1-2min	
10	ERROR	Stop					



Batterytest
Hard- and
Software from
BaSyTec
enclosed



GUSTAV KLEIN
POWER SUPPLIES - since 1948

The high dynamic 2 quadrant rectifier is particularly developed for the comprehensive performance evaluation by electrical motors for vehicles.

Due to our modern control with PWM-rectifier (IGBT) we achieve a very good rule dynamic over the complete power range.

Extensively configurable interfaces make the integrations in different system environments possible.

Technical Data		
Rated capacity:	kW	up to 500 kW
Rectifier construction:		IGBT, PWM, galvanic isolated ($\lambda > 0,98$)
Input voltage:	V	230/400, 3-phase, N, PE
Input frequency:	Hz	50 (60) \pm 5%
Output voltage (adjustable)	V	up to 1000
Output current:	A	6 to 600
Voltage regulation static	%	\pm 0.05 (fs)
Ripple:	%	< 0.5 rms (fs)
Current rise time:	msec	< 3
Short-circuit characteristic:		short-circuit proof
EMC:		according to EN 61000-6-4, EN 61000-6-2
Acoustic noise level:	dB(A)	50 – 70
Cooling:		„AF“ forced air cooling
Overall efficiency at nominal load:	%	typical >94% at 220V DC
Permissible ambient temperature:	°C	0 to + 40
Permissible climate:		moderate climate according to 3K3, EN60721
Permissible operating altitude:		1000 m above m.s.l.
Cabinet dimensions:	mm	on demand
Protection class:		IP 20 according to EN60529
Paint finish:		RAL 7035
Monitoring (configurable)		AC-under voltage with switch off DC-over- and under voltage Current limiting Temperature control
Display / operation:		Digital measurement system LC-Display 4-lines Incremental control Intuitive menu navigation Optional: Operation terminal (CAN – Bus)
Remote signal (configurable floating contacts)		On (clearance controller) Operation / Failure Emergency stop
Options:		http, Ethernet, EtherCAT, TFT-Display

For your requirements / specifications we are pleased to prepare an individual system configuration

03/2012

subject to change without notification

D-86956 Schongau Im Forchet 3
D-86952 Schongau, Postfach 12 48
Tel. (08861) 209-0, Fax (08861) 209-180



A-6401 Inzing/Tirol, Schießstand 2
Tel. (05238) 5 42 09-0
Fax (05238) 54209-23

E-Mail: vertrieb@gustav-klein.com Internet: www.gustav-klein.com